



ENGLISH GOLF UNION
...at the heart of golf

Golf Society Packages 2012

A truly demanding course, designed originally by the legendary player and course architect, JH Taylor, and strengthened by the incomparable Dr Alistair Mackenzie, Fulwell offers a test of for golfers of all abilities.

Easily accessible from Central London, with excellent public transport links, Fulwell is an ideal destination for a golfing experience.

Each of our packages are named in recognition of the prestigious golf professionals that have served at Fulwell Golf Club and made it a centre of excellence for learning the game of Golf. Please find below a list of packages that we offer. Bespoke packages are available on request.

The Gaudin Package - £50pp

Coffee & Bacon Roll on arrival, 18 Holes followed by a light lunch.

The Taylor Package - £60pp

Coffee & Bacon Roll on arrival, 18 Holes followed by a 3 Course lunch.

The Oke Package - £60pp

Coffee & Bacon Roll on arrival, 27 holes with a light lunch in between.

The Cotton Package - £65pp

Coffee & Bacon Roll on arrival, 18 holes Am, light lunch, 18 holes Pm.

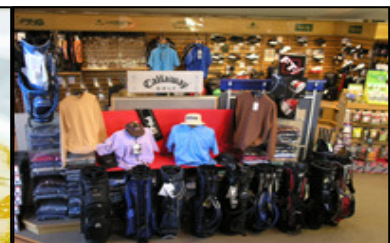
The Cox Package - £75pp

Coffee & Bacon Roll on arrival, 9 Holes Am, light lunch, 18 holes Pm followed by a 3 Course evening meal.

The Haslam Package - £80pp

Coffee & Bacon Roll on arrival, 18 Holes Am, Light Lunch, 18 Holes Pm followed by a 3 Course evening meal.

(All prices are exclusive of VAT)





ENGLISH GOLF UNION
...at the heart of golf

Golf Society Terms & Conditions

Booking Process

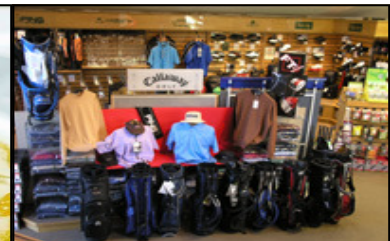
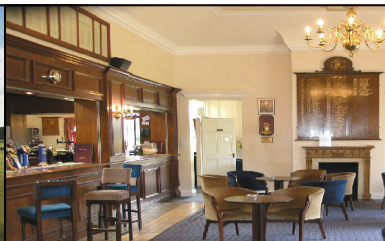
Society bookings are available on Monday, Thursday and Friday.

Organisers should first contact the Secretary to check availability and obtain a provisional booking.

The Secretary will then forward the appropriate forms for your completion and return, together with the appropriate deposit.

Conditions of Hire

- The booking is NOT confirmed until receipt of signed booking form and deposit:
Under 20 - participants = £100; 25 to 45 participants = £200;
Excess of 45 participants (course to be closed) = £500.00
- The minimum number of participants is 12.
- Final numbers must be confirmed 7 days in advance of your society visit. Please note that you will be liable to pay for this confirmed number of participants.
- If actual numbers fall below 12 you will be liable to the full amount of this minimum number of participants regardless of the number attending.
- Cancellations may be accepted up to 28 days in advance of the booking upon which the deposit will be forfeit. Any cancellation within 28 days will be liable to the full payment of the minimum number of participants (12 x the package price of the arrangements confirmed) or if in excess of 40 participants (£1500).
- Payment must be made in full by no later than 2.00pm on the day of your society visit. Please note that we do not accept credit card payments.





ENGLISH GOLF UNION
...at the heart of golf

General Information

Please note the Clubhouse does not open until 8.00am.

It is expected that ALL members of visiting Societies will:

- Have attained a standard of golf equivalent to a handicap of 28 for men and 36 for women, Society or club handicap certificates may be requested.
- Be conversant with the rules and etiquette of the game of golf.
- Play from Yellow Tees (SSS 70).

The first tee will be reserved from 9am or 2pm (as applicable); play may not commence before 9am.

Players must “pick up” if they cannot score on any hole. If you wish to play an alternative format this must be agreed in advance with the Secretary / Manager.

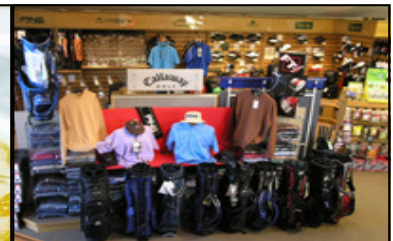
Trolley must always be kept off approaches and surrounds to the green and away from tees.

All society participants must make themselves aware of the rules of the Club and abide by any course restrictions in place. The society organiser must make themselves aware of such restrictions on the day by speaking to either the Club Professional or Secretary.

Dress Code

Golfing attire may be worn in the Dining Room at lunchtime, excluding shorts. Shorts may be worn on the Course, but must be tailored and worn with predominantly white ankle socks or knee-length socks.

Shorts are not permitted to be worn in the Lounge Bar or Dining Room.





ENGLISH GOLF UNION
...at the heart of golf

General Information (Continued..)

Denim clothing, tee-shirts or trainers are not permitted on the Course or in the Clubhouse. Shirts must be tucked in. Dress for dinner is jacket and tie.

Mobile phones are only to be used in the car park.

Changing room facilities are available to visitors but please advise your Members not to leave valuables, since no responsibility can be accepted for their security.

The Snooker Room and Card Room are not available to visiting societies.

Bar Hours are as published on the website and also the main lobby notice board; they are strictly enforced and the Clubhouse will close 30 minutes after closing time for the day.

Visitors may only park in the visitor's car park, located immediately left, following passage through the entry gate.

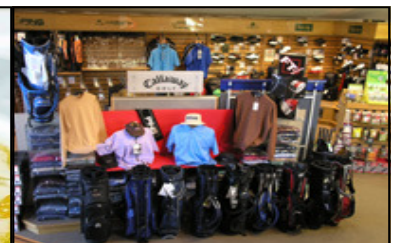
Fulwell Golf Club reserve the right to close the course without notice if poor weather conditions prevail.

All visitors are personally liable for any loss or damage however caused to property or other persons.

Fulwell Golf Club cannot be held liable or have responsibility for any personal injury, loss or damage to property or any other liability whilst on the Club premises or grounds.

It is the responsibility of the society organiser to make all their society participants aware of the above details.

The Club Secretary and his staff are empowered to ensure that all aspects of the Club rules are observed, enforced and if infringed may result in a society being precluded from future visits to Fulwell Golf Club.





ENGLISH GOLF UNION
...at the heart of golf

Catering Selection

Breakfast

- a) Bacon Roll, Tea & Coffee
- b) Continental Option (Cereal, Pastry, Fresh Fruit) Tea & Coffee)
- c) Full Breakfast with Tea, Coffee & Fresh Juice (£3.00 extra per person)
- d) "The works" Full Breakfast Buffet with a continental selection. Tea, coffee and fruit juices included. (£5.00 extra per person)

Light Lunch

- a) Ploughman's Luncheon: Wedge of Cheddar, Baguette, pickled onion, Branston Pickle
- b) Honey roasted ham and free range fried eggs, served with chips and bread and butter
- c) Goat's cheese and pepper Lasagne served with salad, garlic baguette slices and potato wedges
- d) Homemade soup of the day and selection of sandwiches and fresh baguettes and butter

Dinner

Starters

- a) Chef's homemade soup of the day with Croutons
- b) Pork and onion confit pate en croute served with bruschetta
- c) Chilled fans of honeydew and cantaloupe melons, fruit coulis
- d) Tempura battered king prawns, sweet chilli dressed saladette
- e) Beef and cherry Tomato, red pesto and mozzarella salad
- f) Prawn, avocado and crayfish salad served on crisp iceberg lettuce

Mains

- a) Roast Beef & Yorkshire pudding, horseradish sauce
- b) Pork loin steak, red onion and apple sauce
- c) Gammon Steak served with grilled Tomato and Pineapple
- d) Steak, shallot & Ale pie, puff pastry lid
- e) Braised Steak in Red Wine and onion sauce
- f) Roasted breast of chicken with a rich white wine and chive cream sauce
- g) Carvery Main Course choice of two meats (£2.00 extra per person)

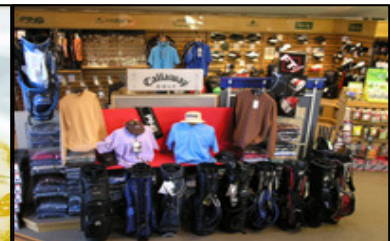
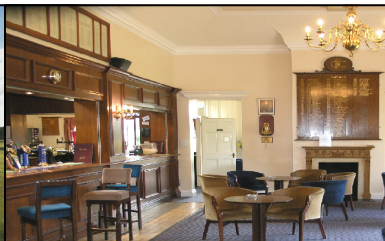
Minimum of 20 people needed for this option

All main courses served with fresh market vegetables and an appropriate potato dish

Desserts

- a) Mixed fruit Crumble served with Custard
- b) Apple Pie served with Custard or Cream
- c) Bread & Butter Pudding and rich vanilla custard
- d) Raspberry crème brûlée
- e) Fresh fruit salad served with ice cream
- f) Chocolate fondant, with cream and mixed berry compote
- g) Seasonal berry cheesecake
- h) Selection of cheeses, tomato and onion chutney and biscuits

Add a cheese course as an addition course for £3.00 per person





ENGLISH GOLF UNION
...at the heart of golf

Booking Form

Name of Society _____

Date Required _____ No. of Players _____

Contact Name _____

Address _____

Telephone Number _____

I enclose a deposit of _____ (£5.00 per player (est.), minimum £100.00)

Signature _____

(I agree to The Fulwell Golf Club Golf Society Terms and Conditions)

PLEASE TICK THE GOLF SOCIETY PACKAGE YOU REQUIRE:

Society Package	Cost Per Player
The Gaudin	£48.00 _____
The Taylor	£58.00 _____
The Oke	£58.00 _____
The Cotton	£60.00 _____
The Cox	£70.00 _____
The Haslam	£75.00 _____

(All prices include VAT)

Menu Selection

(Please select letter from previous page)

Breakfast Light Lunch Dinner

